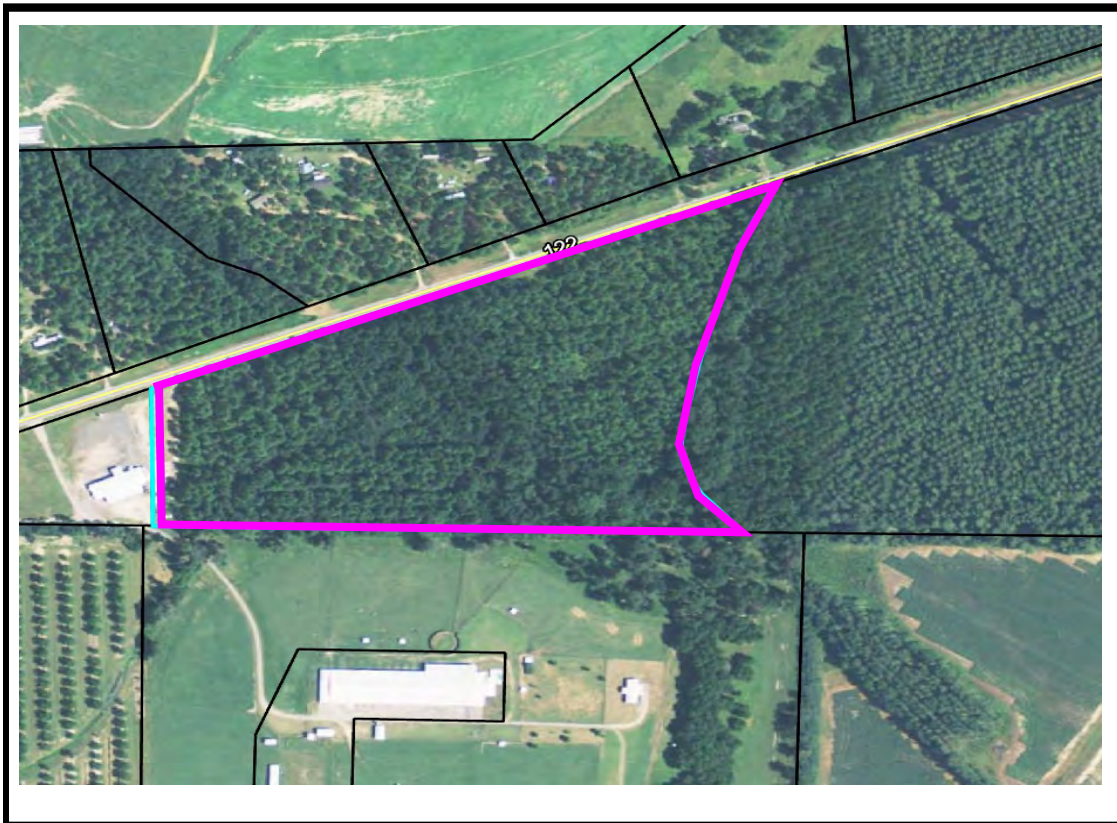




## Property Information Packet

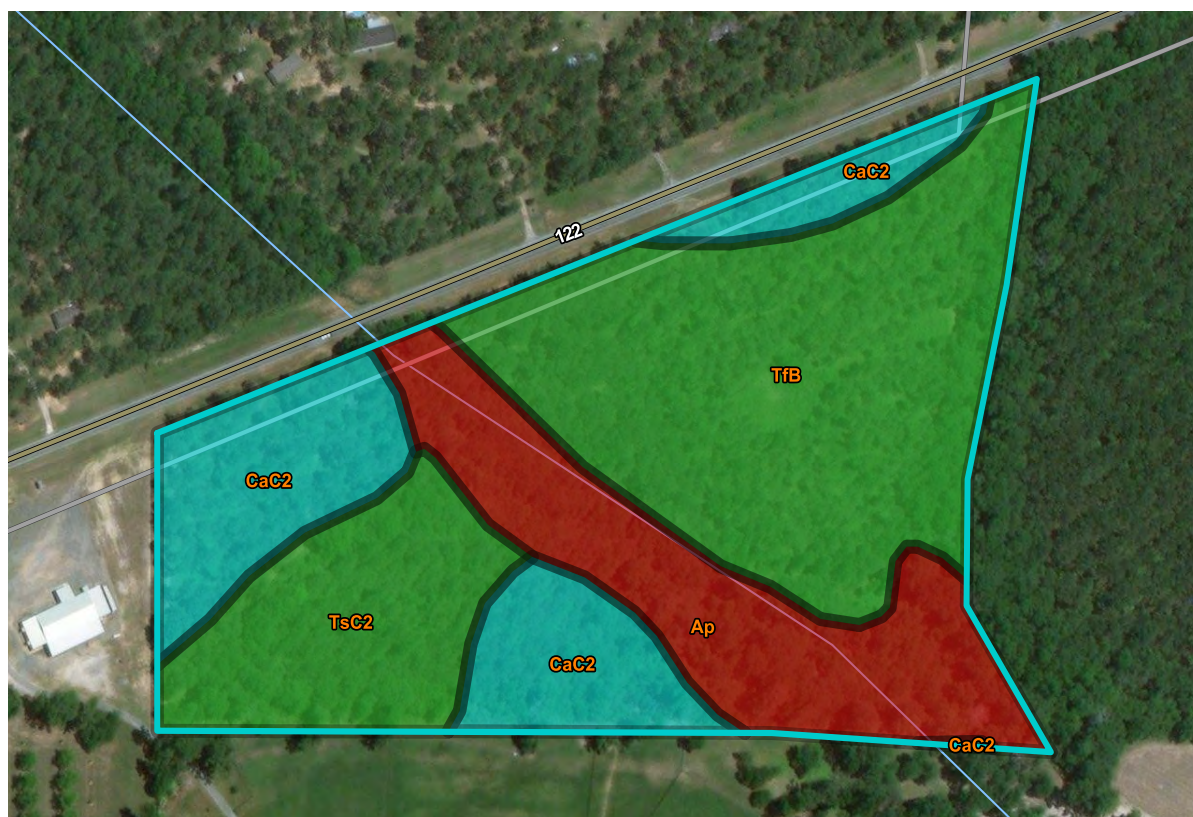
**28 ACRES**  
**Hwy 122 Brooks County, GA**  
**Timber, Creek Bottom, Home**  
**Sites, and Wildlife**  
**\$ 1 , 00.00**





Daniel E. Crocker  
Member Thomasville Area Board REALTORS  
Mobile: (229) 403-6297  
Fax: (229) 226-6532  
crocker@rose.net  
www.landcroc.com  
CROCKER REALTY, INC  
1207 E. Jackson St.,  
Thomasville, GA 31792



**All Property Line Drawings are Approximate and taken from County Tax Assessor Website.**

# Soil Map



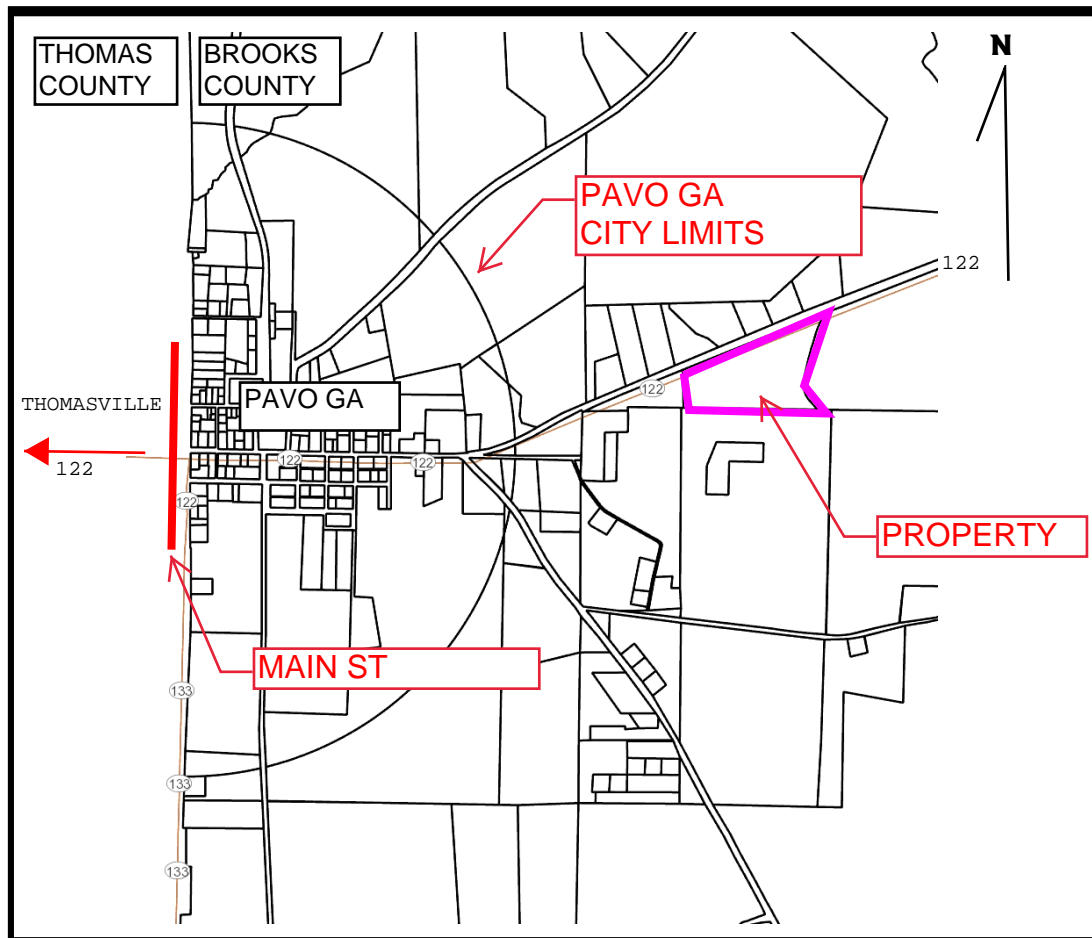
Map unit symbol	Map unit name	Rating	Acres in AOI	Percent of AOI
Ap 	Alapaha loamy sand, 0 to 2 percent slopes, occasionally flooded	Not prime farmland	6.0	21.2%
CaC2 	Carnegie sandy loam, 5 to 8 percent slopes, moderately eroded	Farmland of statewide importance	6.4	22.6%
TtB 	Tifton loamy sand, 2 to 5 percent slopes	All areas are prime farmland	11.4	40.5%
TsC2 	Tifton sandy loam, 5 to 8 percent slopes, eroded	All areas are prime farmland	4.4	15.7%
<b>Totals for Area of Interest</b>			<b>28.2</b>	<b>100.0%</b>

# Photos

  
**CROCKER**  
REALTY INC.  
landcroc.com  
229-228-0552

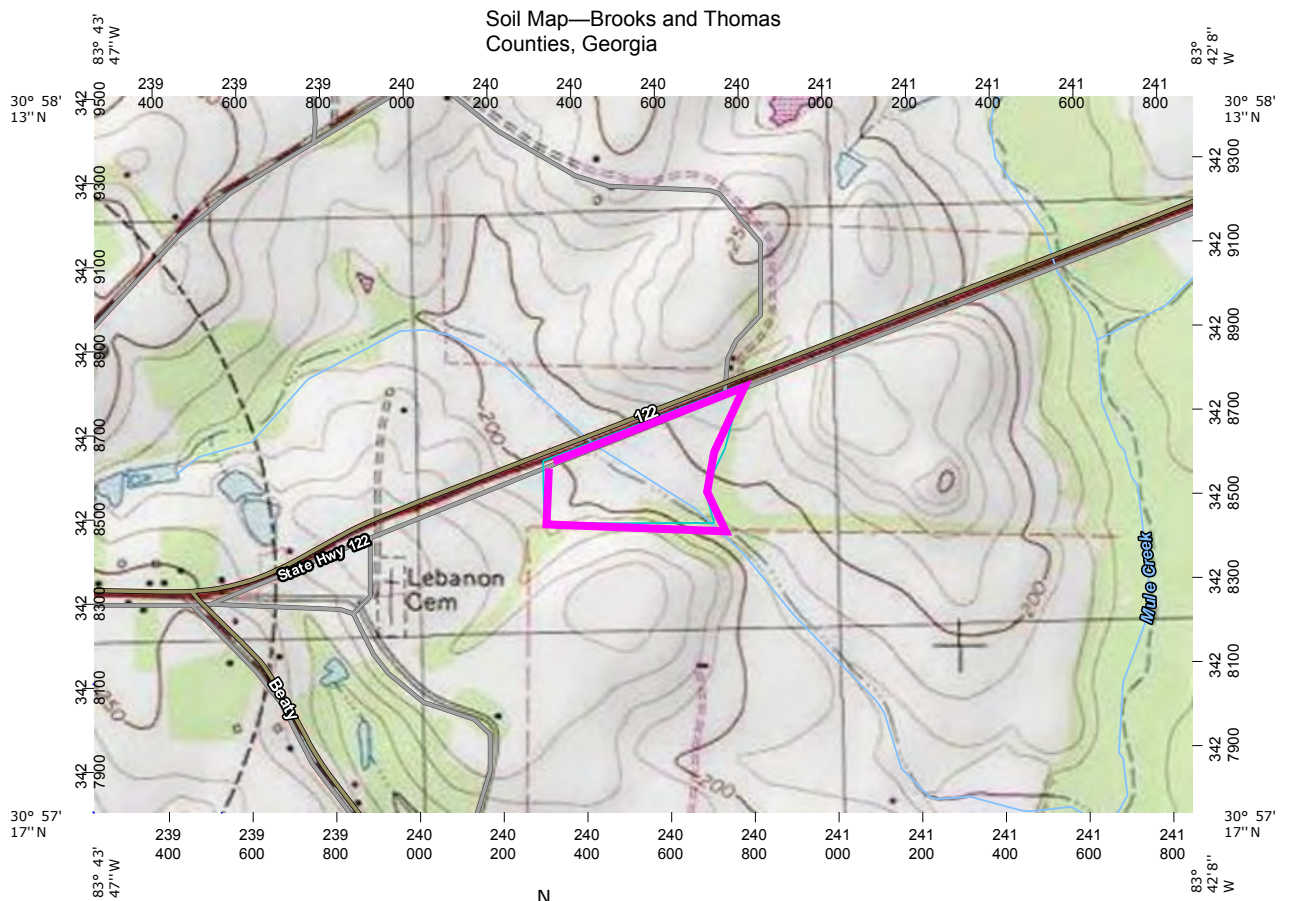


# Locator Map



**1.56+/- Miles East on Hwy 122**  
**from Main Street Pavo GA**

# Topo Map



Map Scale: 1:12,000 if printed on A landscape (11" x 8.5") sheet.

